

Understanding our system and  
identifying areas of improvement

## PRIORITIZATION (2)

# Coordinated Entry Core Elements



Initial Triage



Diversion



Intake



Initial Assessment



Potential Eligibility Assessment

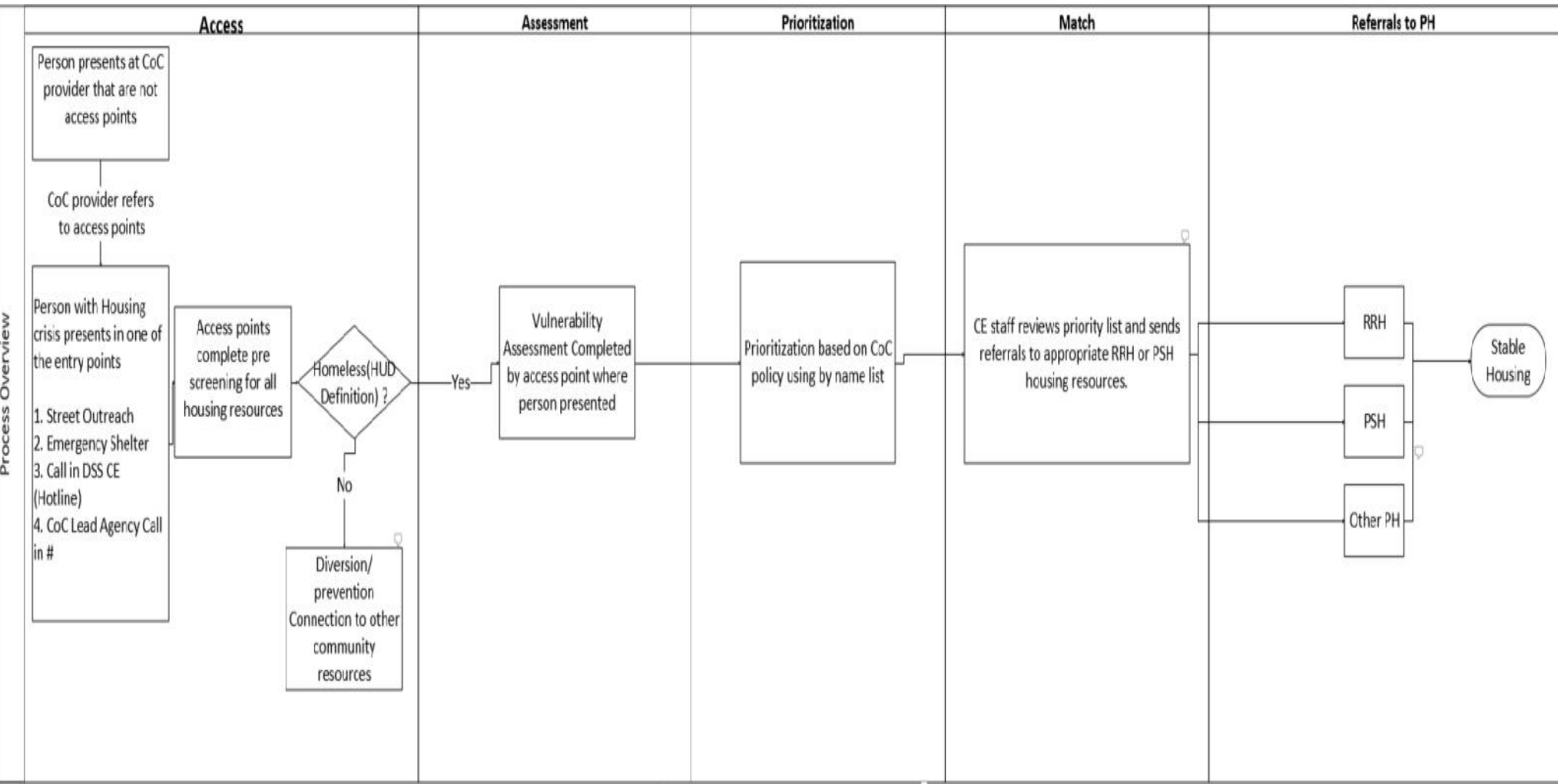


Comprehensive Assessment

1. \_\_\_\_\_
2. \_\_\_\_\_
3. \_\_\_\_\_
4. \_\_\_\_\_
5. \_\_\_\_\_



Process Overview



## PRIORITIZATION

1. \_\_\_\_\_

2. \_\_\_\_\_

3. \_\_\_\_\_

4. \_\_\_\_\_

5. \_\_\_\_\_

During assessment, the person's needs and level of vulnerability may be documented for purposes of determining **Prioritization**. **Prioritization** helps the CoC manage its inventory of community housing resources and services, ensuring that those persons with the greatest need and vulnerability receive the supports they need to resolve their housing crisis.

**\*HUD expects that the most vulnerable are prioritized for services.**

# Review of “PRIORITIZATION” Session 1 (9-8-22)

- Continued focus on:
  - Emergency Services/After Hours
  - DV
  - Geographical
- Reviewed current system data and VI-SPDAT prioritization categories
  - Does the Blue Ridge Continuum of Care wish to begin work on the development and implementation of a localized assessment tool for prioritization of services? – **VOTE: YES**
  - Does the Blue Ridge Continuum of Care want to begin prioritizing housing resources (RRH and PSH) from a single prioritization list, regardless of subpopulation considerations? - **VOTE: YES**

# Next Meeting

**Thursday, November 10<sup>th</sup> at 10:00AM.**

Via Zoom (link provided in meeting invitation to follow).

**REFERRAL**